

**HOSPITAL 12 DE OCTUBRE
RESEARCH INSTITUTE
(IIS i+12)**



**Instituto de Investigación
Hospital 12 de Octubre**

Institute Overview

Prepared by: Quality and Strategic Planning Unit	Reviewed by: Quality and Strategic Planning Unit	Approved by: I+12 Institute Director
Date: 15 October 2015	Date: 7 May 2018	Date: 8 May 2018

TABLE OF CONTENTS

- 1.** Introduction and Member Entities
- 2.** Organizational and Scientific Structure
- 3.** Specific Plans of the i+12 Institute
- 4.** Quality and Good Scientific Practices
- 5.** Research Support Services
- 6.** Website and Contact Information

1. Introduction and Member Entities

The Research Institute of the Hospital 12 de Octubre (i+12 Institute) was founded in 2009 through the association of several entities with common interests. The core of this Institute is the **University Hospital 12 de Octubre**, which was later followed by the **Complutense University of Madrid**, the **Regional University of Madrid** and the **Primary Care** setting.

The body responsible for managing the i+12 Institute is the **Foundation for Biomedical Research of the Hospital 12 de Octubre**.

The i+12 Institute was created with an integrating character; hence, several entities of strategic interest for the conduct of its activities joined it in 2015: the **Research Center for Energy, Environment and Technologies (CIEMAT)** and the **European University (EU)**.

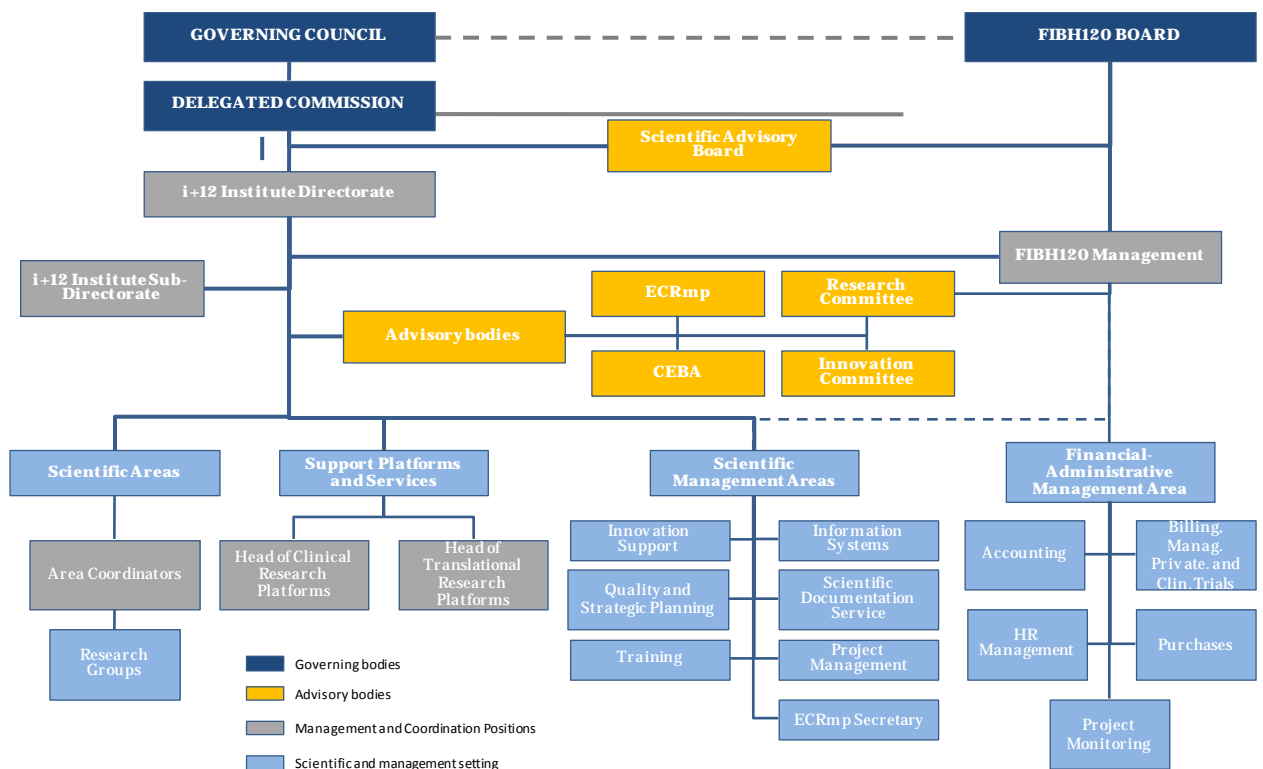


2. Organizational and Scientific Structure

The **organizational structure** of the i+12 Institute is currently comprised by **government, management, advisory and operational bodies**. The **highest governing body** of this Institute is the **Governing Council**, which features the **Board of the Foundation for Biomedical Research of the Hospital 12 de Octubre among its members**.

Both the **Governing Council** and the **Delegated Commission** of the i+12 Institute are comprised by **representatives of all entities** that compose it.

As the Institute's managing body, the **Foundation for Biomedical Research of the Hospital 12 de Octubre** is included in the **general organization structure** of the i+12 Institute and is complemented by the **Scientific Management Area**.



2. Organizational and Scientific Structure

At a scientific level, the i+12 Institute boasts a total of 9 main prioritized scientific areas.

CANCER

- Translational Biophysics.
- Translational Hematology.
- Translational Energetic Metabolism.
- Neurooncology.
- Skin Oncology.
- Thoracic and Clinical Translational Oncology.
- Genitourinary, Cellular and Molecular Oncology.
- Breast and Gynecological Cancer.
- Digestive Cancer.

CHRONIC DISEASES AND TRANSPLANTS

- Aging, Neuroimmunology and Nutrition.
- Respiratory Diseases.
- Bone Metabolism, Diabetes and Nutrition.
- Clinical Nephrology.
- Pulmonary Surfactant and Respiratory Diseases.
- Men's Comprehensive Health.
- Tissue Engineering.
- Abdominal Organ Transplant.
- Critical Patient.
- Renal Transplant.

RARE AND GENETIC DISEASES

- Rare, Mitochondrial and Neuromuscular Diseases.
- Physiopathology of Mitochondrial Biogenesis.
- Laboratory of Mitochondrial Membranes.
- Porphyrins, Hemochromatosis and Anemia.
- Cellular Homeostasis Control.
- ALS Research.

EPIDEMIOLOGY AND ASSESSMENT OF HEALTH TECHNOLOGIES, SERVICES AND INFORMATION SYSTEMS

- Clinical Epidemiology, Evaluation of Health Technologies and Information Techniques.
- Research in Health Services and Results.
- Maternal and Child Health.
- Research in Complex Patients and Health Care Service

CARDIOVASCULAR

- Translational Multidisciplinary Cardiovascular Research.
- Research in Cardiovascular Imaging.
- Research in Heart Failure and Hypertension.
- Translational Research in Hypertension and Cardioresenal Diseases.
- Research in Perinatal Medicine
- Research in Cardiovascular Risk.

INFLAMMATORY DISEASES AND IMMUNE DISORDERS

- Asthma and Immunoallergic Diseases.
- Molecular and Cellular Bases in Rheumatic Diseases.
- Inflammatory and Autoimmune Diseases.
- Lymphocyte Immunobiology.
- Immunodeficiencies and Transplantation Immunology.

INFECTIOUS DISEASES AND AIDS

- Virology - HIV/AIDS
- Molecular Epidemiology of Hospital and Emerging Infections
- Translational Research in Leishmaniasis.
- Translational Research in Malaria.
- Infectious Pathologies.
- Research in Pediatric Infection.

NEUROSCIENCE AND MENTAL HEALTH

- Cognition and Psychosis.
- Neurodegenerative Diseases.
- Translational Psychiatry.
- Neurotraumatology and Subarachnoid Hemorrhage.
- Addictions and Comorbidity.
- Neurovascular.

TRANSVERSAL AREA

- Research in Physical Activity and Health.
- Regenerative Medicine.
- Medical Chemistry Laboratory.
- Homeostasis and Tissue Physiopathology of Stem Cells.
- Research in Intelligent Biomaterials.
- Genetics and Heritage.

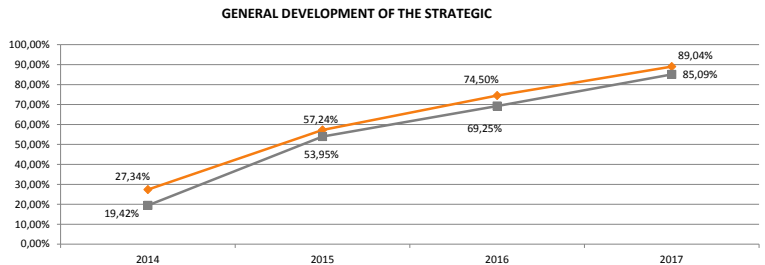
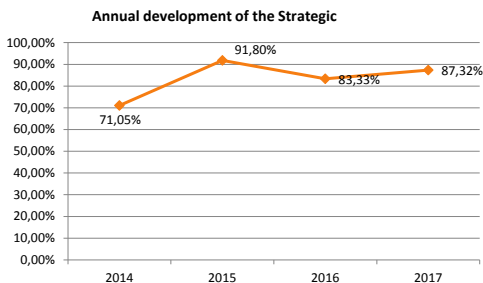
3. Specific Plans of the i+12 Institute

STRATEGIC PLAN

In 2014, the i+12 Institute developed its **Strategic Plan for the 2014-2018 period**. This Strategic Plan is divided into **5 key areas or Strategic Axes**, whose main purpose is ensure re-accreditation as Health Institute of Research.

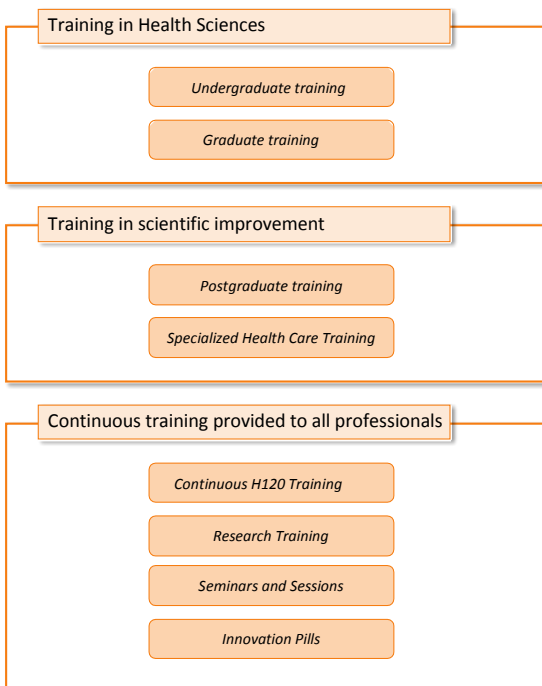


An **annual assessment of the degree of compliance with the objectives and actions proposed in the Plan** was performed in **January 2018**.



SCIENTIFIC TRAINING PLAN

The i+12 Institute has a **Training Plan** aimed at all **scientific staff** employed by the Institution.



MENTORSHIP PLAN FOR EMERGING GROUPS

The actions that serve to support the **constitution of the emerging groups** of the i+12 Institute are defined below:

- Providing support in the raising of funds.
- Allowing for the shared use of support services.
- Providing training in research methodologies.
- Intensifying the research and innovative activity.
- Including interns in research groups.
- Including trainee researchers with a healthcare background.
- Supporting the development of scientific and innovative activities.
- Supporting the identification of cooperation opportunities.
- Scientific Contest “Ana María Martínez”.

4. Quality and Good Scientific Practices

The i+12 Institute has defined its Quality Policy as:

“The focus of the organization and all its professionals geared towards performing activities aimed at guaranteeing the utmost level and quality in the field of health research and innovation, as well as meeting the requirements of its clients”.

The orientation towards quality of the i+12 Institute can be classified into the following **FOUR** main areas:

1. Quality Oriented Towards **Research and Innovation**

The i+12 Institute carries out actions aimed at **guaranteeing and consolidating the excellence of the research** carried out by its professionals by providing the tools needed to achieve this goal.

2. Quality Oriented Towards **Management**

The i+12 Institute focuses on evaluating and optimizing its managerial resources and processes with a view to **improving and expediting** the services that it provides to the rest of the organization.

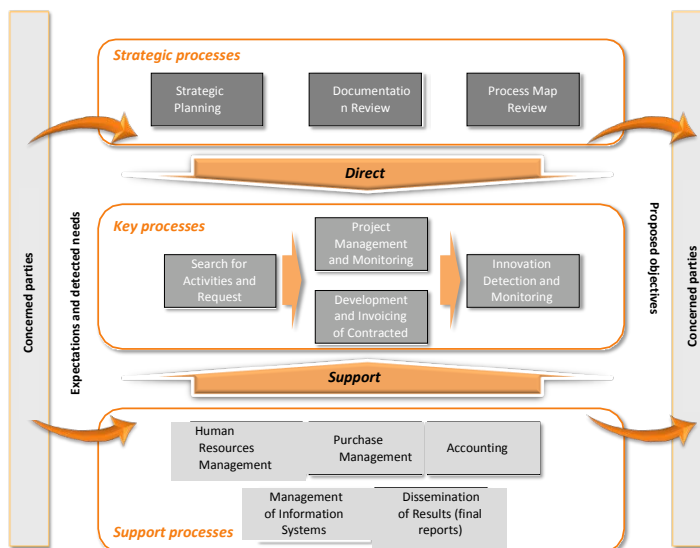
3. Quality Oriented Towards the **Client**

The entire organization of the i+12 Institute is immersed in a **continuous improvement process** aimed at identifying those areas with potential for improvement that may optimize the organization’s operation and guarantee a **greater satisfaction of its internal and external clients**.

4. Quality Oriented Towards **Cooperation**

One of the critical aspects linked to the success of an organization oriented towards health research and innovation is the **consolidation of the relationships established with other related entities**. This is why the i+12 Institute has defined an **active integration and cooperation policy** of the utmost quality with other strategic partners.

PROCESS MAP



GOOD SCIENTIFIC PRACTICES

To guarantee the implementation of **good scientific practices**, the **i+12 Institute** has developed its own **Manual of Good Practices**, with the aim of establishing an ethical code of behavior for all workers.

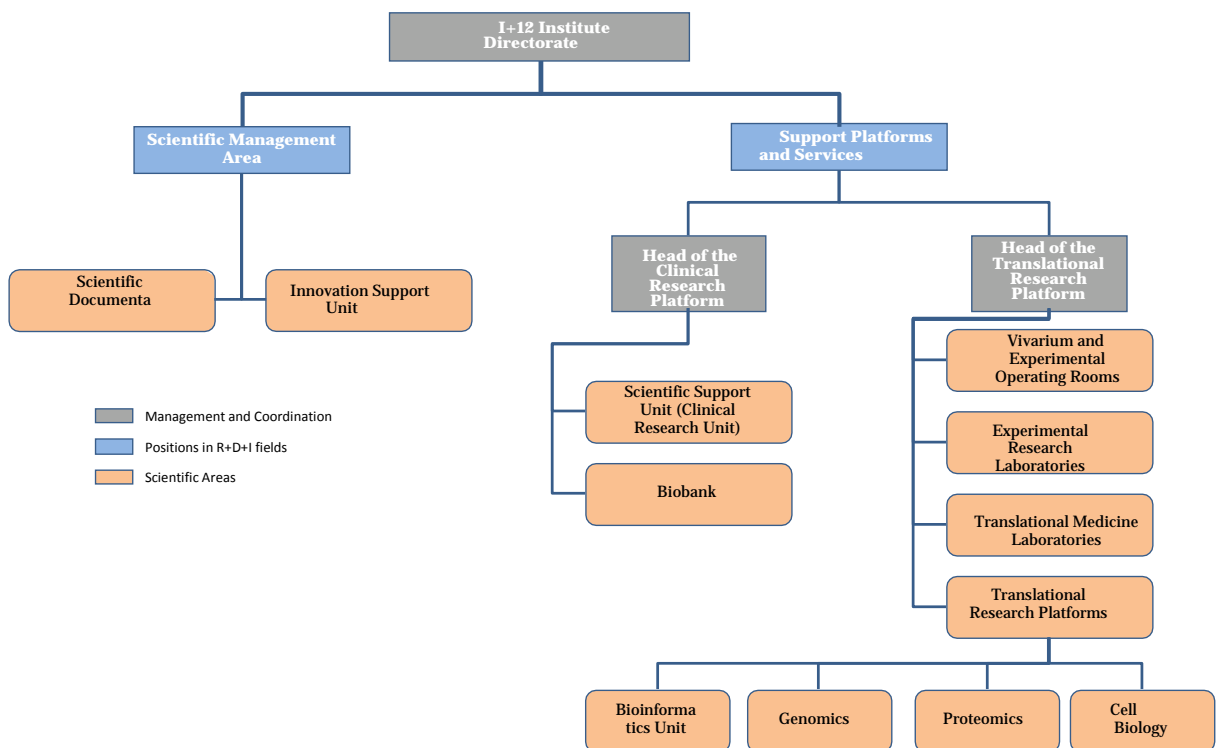
This **regulation is available in the Quality and Strategic Planning Unit** of the Institute and can be consulted by any professional.

5. Research Support Services

The **Research Support Services** collaborate in the research projects carried out by groups belonging to the i+12 Institute. Each service **features state-of-the-art technologies and infrastructures** within their corresponding area, and are designed to incorporate new technologies as they emerge and develop.

These services **are available to all users** and are highly competitive. The units carry out research projects with internal or external research groups to **improve the technologies and methodologies used**.

The **Research Support Services** that the i+12 Institute makes available to its researchers are the following:



- **Clinical Research Support Platforms:**
 - Scientific Support Unit (Clinical Research Unit). Contact information: infoinvestigacion.soporte.imas12@h12o.es
 - Biobank. Contact information: biobanco.hdoc@salud.madrid.org
- **Translational Research Support Platforms:**
 - Bioinformatics Unit. Contact information: adelmiro@h12o.es; ffernandezm@salud.madrid.org
 - Flow Cytometry Unit. Contact information: gcriado@h12o.es
 - Confocal Microscopy Unit. Contact information: fbartolome.imas12@h12o.es/ gemarui@h12o.es
 - Vivarium and Experimental Operating Rooms. Contact information: montsegrau@h12o.es
 - Genomics Unit. Contact information: jcrubio@h12o.es; ffernandezm@salud.madrid.org
 - Proteomics Unit. Contact information: inesgcg@h12o.es
- **Other Support Services Offered by the i+12 Institute:**
 - Scientific Documentation Service. Contact information: <http://cendoc.h12o.es/>
 - Innovation Support Unit. Contact information: innovacion.imas12@h12o.es

6. Website and Contact Information

The i+12 Institute owns a **corporate website** featuring diverse information on **the structure and activity of the Institute:**

- Corporate information and organizational structure.
- Research areas and groups.
- Standardized documents for the conduct of scientific activities.
- Research support services, including innovation.
- News and calls.
- Training activities.
- Access to the library and the corporate email.

www.imas12.es



CORPORATE CONTACT DETAILS

Tel. No.: 917 79 28 39
E-mail: info.imas12@h12o.es